



Ежедневный отчет по индексам зернового и масличного рынка

22 февраля 2012 г.

Index USD	USD	Изменение закрытия к датам 2012г.				Экстремумы		Сезонность: Изменение закрытия к датам 2000-2011 годов											
	CLOSE	Day	Weekly	Month	Year	2000-2012 гг.		2011	2010	2009	2008	2007	2006	2005	2004	2003	2002	2001	2000
	22.02.2012	21.02.2012	17.02.2012	31.01.2012	30.12.2011	MAX	MIN	22.02.2011	22.02.2010	23.02.2009	22.02.2008	22.02.2007	22.02.2006	22.02.2005	23.02.2004	21.02.2003	22.02.2002	22.02.2001	22.02.2000
ASP Grain&Oilseeds	348,3	0,20%	-0,10%	0,47%	1,96%	-19%	205%	-7%	33%	38%	-7%	54%	107%	117%	76%	144%	193%	179%	176%
ASP Grain	307,0	0,22%	-0,48%	-1,05%	0,45%	-22%	211%	-8%	35%	35%	-5%	50%	103%	117%	90%	156%	204%	170%	173%
ASP Wheat	273,7	0,32%	0,55%	0,01%	5,05%	-32%	224%	-15%	41%	42%	-26%	42%	86%	96%	51%	143%	169%	148%	153%
ASP Corn	279,4	0,65%	-0,67%	0,02%	1,56%	-15%	252%	-3%	61%	76%	22%	50%	145%	167%	100%	170%	212%	196%	186%
ASP Barley	225,4	-0,14%	0,19%	3,95%	10,51%	-20%	200%	-9%	76%	93%	-14%	33%	87%	95%	60%	126%	142%	143%	175%
ASP Malt	306,5	0,00%	-0,70%	0,51%	7,51%	-33%	124%	5%	102%	92%	-26%	15%	118%						
ASP Rice	472,6	-0,37%	-1,71%	-4,54%	-7,93%	-50%	346%	-4%	1%	-5%	0%	53%	71%	77%	113%	165%	294%	170%	190%
ASP Oilseeds	513,9	0,15%	0,81%	4,31%	5,74%	-23%	221%	-4%	30%	44%	-14%	67%	121%	116%	51%	119%	166%	203%	182%
ASP Soybean	502,8	0,17%	0,57%	4,22%	4,62%	-24%	190%	-3%	26%	37%	-12%	61%	114%	113%	44%	117%	174%	166%	136%
ASP Rapeseed	577,4	-0,30%	1,14%	4,27%	8,20%	-22%	251%	-2%	52%	71%	-14%	76%	150%	139%	84%	130%	174%	228%	228%
ASP Sunflower	495,9	0,91%	2,00%	3,44%	12,49%	-39%	299%	-25%	24%	79%	-38%	85%	137%	83%	74%	112%	84%	203%	192%
ASP Flax	460,0	0,00%	0,00%	-0,03%	1,63%	-31%	142%	-23%	4%	5%	-23%	47%	44%	19%	32%	65%	92%	118%	
ASP VegOil	1 193,7	0,01%	1,08%	4,91%	3,81%	-20%	404%	-14%	40%	89%	-13%	95%	154%	156%	105%	140%	244%	383%	256%
ASP PalmOil	1 080,6	0,09%	1,54%	5,10%	5,00%	-20%	500%	-14%	35%	106%	-6%	93%	172%	201%	107%	152%	248%	448%	286%
ASP SoyOil	1 260,5	0,01%	0,92%	6,01%	5,46%	-22%	338%	-4%	45%	87%	-19%	108%	179%	166%	114%	124%	300%	290%	257%
ASP RapeOil	1 315,9	0,37%	0,22%	2,41%	3,60%	-21%	320%	-5%	41%	64%	-13%	68%	83%	101%	82%	124%	221%	298%	257%
ASP SunOil	1 154,9	0,36%	0,76%	3,74%	4,48%	-41%	255%	-18%	28%	55%	-34%	80%	118%	79%	72%	100%	99%	221%	192%
ASP FlaxOil	1 332,3	0,15%	0,68%	1,96%	4,90%	-22%	233%	-11%	34%	33%	-9%	94%	86%	77%	96%	100%	210%		
ASP Meal	372,8	-0,32%	0,10%	3,62%	9,59%	-25%	132%	-8%	11%	13%	-9%	45%	88%	84%	41%	99%	128%	106%	107%
ASP SoyMeal	397,4	-0,44%	-0,22%	3,23%	9,99%	-25%	135%	-8%	11%	13%	-5%	48%	89%	87%	41%	100%	132%	106%	107%
ASP RapeMeal	265,6	1,04%	4,35%	9,46%	6,83%	-29%	149%	-4%	17%	22%	-26%	23%	95%	73%	45%	90%	104%	105%	111%
ASP SunMeal	207,2	0,07%	0,03%	2,45%	5,19%	-43%	123%	-20%	-6%	4%	-42%	11%	53%	29%	41%	95%	79%	84%	94%
ASP Crush	586,3	-0,03%	0,47%	4,20%	6,88%	-22%	182%	-8%	25%	39%	-17%	65%	110%	103%	66%	109%	168%	171%	163%
ASP SoyCrush	560,9	-0,25%	0,26%	4,39%	8,01%	-20%	190%	-6%	23%	35%	-12%	69%	120%	114%	65%	109%	183%	158%	152%
ASP RapeCrush	685,7	0,53%	1,15%	3,97%	4,33%	-21%	246%	-5%	35%	51%	-16%	55%	86%	93%	72%	115%	184%	227%	208%
ASP SunCrush	606,2	0,31%	0,61%	3,49%	4,62%	-40%	202%	-19%	19%	41%	-36%	60%	101%	66%	65%	99%	95%	180%	166%
ASP Sugar	570,3	0,86%	3,22%	5,56%	7,59%	-25%	394%	-15%	1%	87%	77%	117%	38%	169%	304%	177%	273%	170%	359%
ASP Livestock	4 409,5	0,09%	0,01%	-1,76%	-0,50%	-13%	109%	-2%	24%	61%	16%	29%	41%	27%	37%	76%	63%	46%	81%
ASP Cattle	3 471,1	-0,05%	-0,28%	0,58%	3,38%	0%	152%	8%	41%	76%	38%	62%	61%	63%	89%	121%	107%	93%	115%
ASP Pork	2 040,9	0,52%	0,52%	1,86%	7,37%	-11%	120%	3%	18%	37%	20%	26%	34%	16%	40%	60%	60%	37%	60%
ASP Milk	35,3	0,00%	0,00%	-4,98%	-6,39%	-25%	69%	-9%	18%	69%	0%	11%	32%						
ASP Fertilizer	407,2	0,00%	0,00%	-1,35%	-2,04%	-56%	77%	-15%	13%	46%	-27%								
ASP Biofuels	944,2	0,17%	-0,13%	2,10%	0,76%	-23%	67%	-9%	29%	66%	0%								
ASP Ethanol	634,3	0,50%	-0,38%	1,41%	1,02%	-43%	109%	-11%	19%	34%	-5%	11%	-3%						
ASP Biodiesel	1 254,0	0,00%	0,00%	2,45%	0,63%	-24%	92%	-8%	34%	88%	3%								
ASP Glycerine	253,0	0,00%	0,00%	1,28%	4,98%	-28%	84%	-21%	30%										
ASP DDGS	222,6	-0,02%	-0,30%	3,96%	2,23%	-9%	144%	0%	92%	57%									
ASP CrudeOil	114,6	0,56%	2,85%	9,41%	11,14%	-21%	552%	15%	44%	188%	17%	89%	89%	130%	252%	238%	453%	315%	308%
CRB	322,9	0,13%	1,72%	3,38%	5,75%	-32%	76%	-6%	17%	61%	-19%	3%	-1%	8%	22%	30%	68%	46%	52%
DJCI	148,3	0,39%	1,74%	2,87%	5,41%	-38%	70%	-8%	10%	45%	-29%	-14%	-9%	-3%	5%	21%	65%	35%	51%
BADI	704,0	-0,28%	-1,81%	3,53%	-59,49%	-94%	9%	-45%	-74%	-66%	-90%	-84%	-74%	-86%	-87%	-60%	-30%	-53%	-52%
DJIA	12 938,7	-0,21%	-0,09%	2,42%	5,90%	-9%	98%	6%	25%	82%	5%	2%	16%	22%	22%	61%	30%	23%	26%
S&P500	1 357,7	-0,33%	-0,26%	3,45%	7,96%	-13%	101%	3%	23%	83%	0%	-7%	5%	15%	19%	60%	25%	8%	0%
MICEX	1 538,2	-1,33%	-1,94%	1,59%	9,69%	-22%	1075%	-10%	14%	144%	-11%	-11%	14%	155%	167%	361%	486%	854%	671%
GOLD	1 777,3	1,05%	3,22%	2,20%	13,65%	-6%	596%	27%	60%	79%	88%	162%	221%	309%	346%	406%	508%	587%	483%
SILVER	34,3	-0,03%	3,46%	3,68%	24,02%	-29%	748%	4%	112%	137%	91%	142%	258%	358%	432%	637%	680%	677%	554%

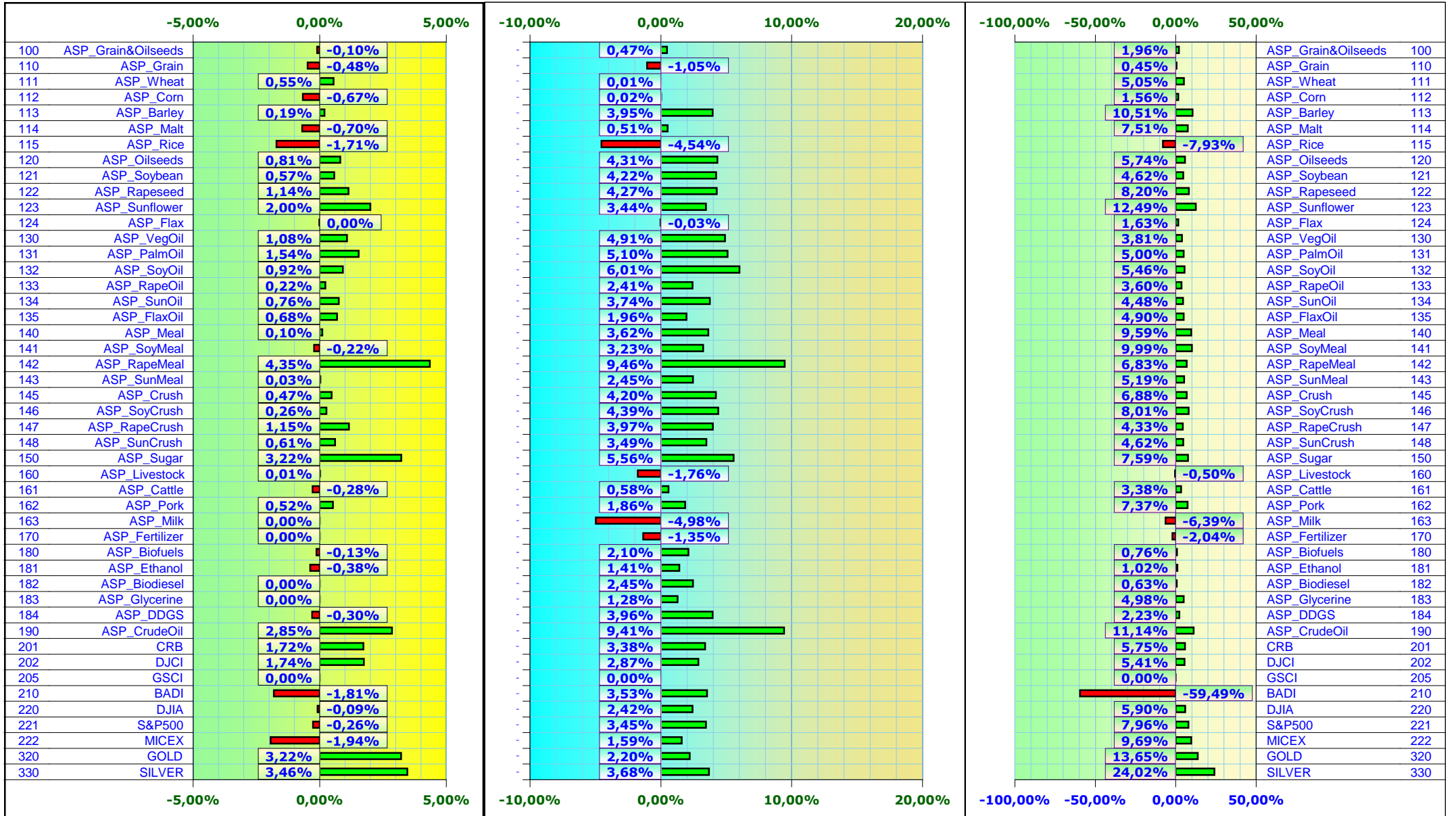


Диаграммы изменения индексов АГРОСПИКЕРА (USD)

Недельные изменения (%) : с 17.02.2012 по 22.02.2012

Изменения за месяц (%) : Февраль, 2012

Изменения (%) за 2012 год





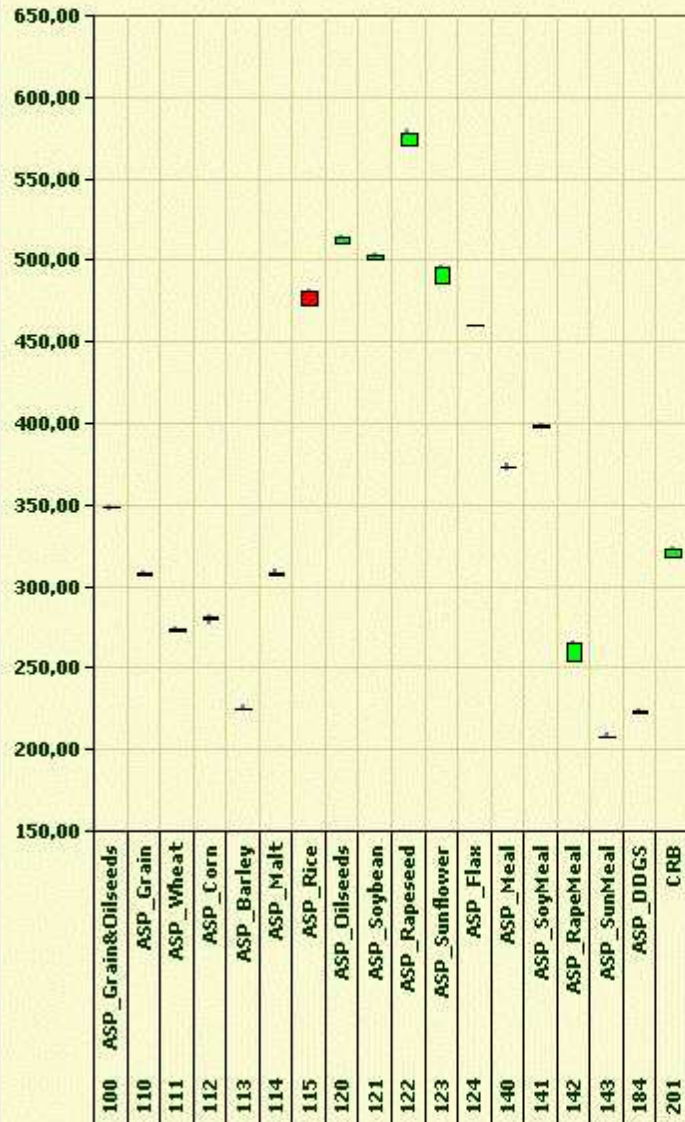
Графики изменения индексов зернового и масличного рынка (USD)

Недельные изменения (%) : с 17.02.2012 по 22.02.2012

Изменения за месяц (%) : Февраль, 2012

Изменения (%) за 2012 год

Неделя



ФЕВРАЛЬ 2012г. (USD/tn)



2012 год

